

Biotinylated Human PD-L2/B7-DC Protein

Cat. No. PDL-HM402B

Description	
Source	Recombinant Biotinylated Human PD-L2/B7-DC Protein is expressed from HEK293 with His tag and Avi tag at the C-Terminus. It contains Leu20-Thr220.
Accession	Q9BQ51-1
Molecular Weight	The protein has a predicted MW of 25.3 kDa. Due to glycosylation, the protein migrates to 40-52 kDa based on Bis-Tris PAGE result.
Endotoxin	Less than 1EU per µg by the LAL method.
Purity	> 95% as determined by Bis-Tris PAGE > 95% as determined by HPLC

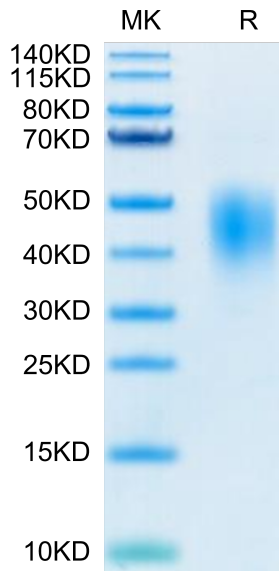
Formulation and Storage	
Formulation	Lyophilized from 0.22µm filtered solution in PBS (pH 7.4). Normally 8% trehalose is added as protectant before lyophilization.
Reconstitution	Centrifuge the tube before opening. Reconstituting to a concentration more than 100 µg/ml is recommended. Dissolve the lyophilized protein in distilled water.
Storage	-20 to -80°C for 12 months as supplied from date of receipt. -80°C for 3 months after reconstitution. Recommend to aliquot the protein into smaller quantities for optimal storage. Please minimize freeze-thaw cycles.

Background

PD-1 ligand 2 (PD-L2) as a second ligand for PD-1 and compare the function and expression of PD-L1 and PD-L2. Engagement of PD-1 by PD-L2 dramatically inhibits T cell receptor (TCR)-mediated proliferation and cytokine production by CD4 T cells. At low antigen concentrations, PD-L2-PD-1 interactions inhibit strong B7-CD28 signals.

Assay Data

Bis-Tris PAGE



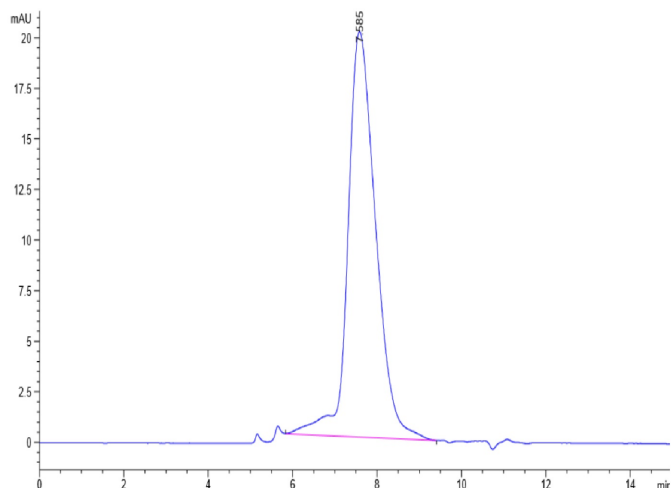
Biotinylated Human PD-L2 on Bis-Tris PAGE under reduced condition. The purity is greater than 95%.

SEC-HPLC

Biotinylated Human PD-L2/B7-DC Protein

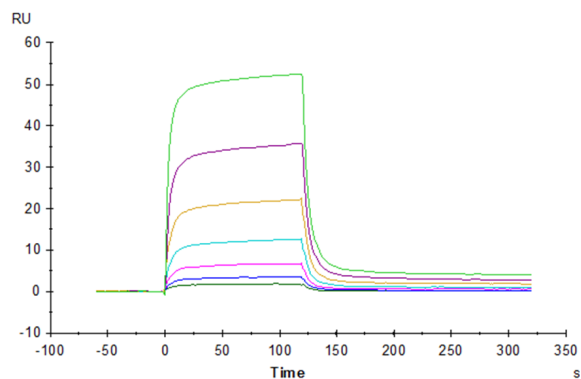
Cat. No. PDL-HM402B

Assay Data



The purity of Biotinylated Human PD-L2 is greater than 95% as determined by SEC-HPLC.

SPR Data



Human PD-1, hFc Tag captured on CM5 Chip via Protein A can bind Biotinylated Human PD-L2, His-Avi Tag with an affinity constant of $0.344 \mu\text{M}$ as determined in SPR assay (Biacore T200).